



Year 4 Peek at the Week

Friday 3rd November 2023

Important Dates /Reminders

Odd socks day (anti-bullying): 13.11.23

School Council Elections: 16.11.23

Wednesdays: wear the correct PE uniform to school. Please bring a water bottle.



Fridays: New homework due next week:

- Reading x3
- Spellings/ English x1
- Maths x1
- Homework Menu

HOMEWORK

Our Learning

This week, we started our new geography unit on agriculture – comparing that of Italy to the UK. We learnt about the process of farming and explored where different foods come from around the world.

In maths, we recapped learning on the subtraction method and started a new topic on Area. We learnt how to calculate the area of a shape by counting squares.

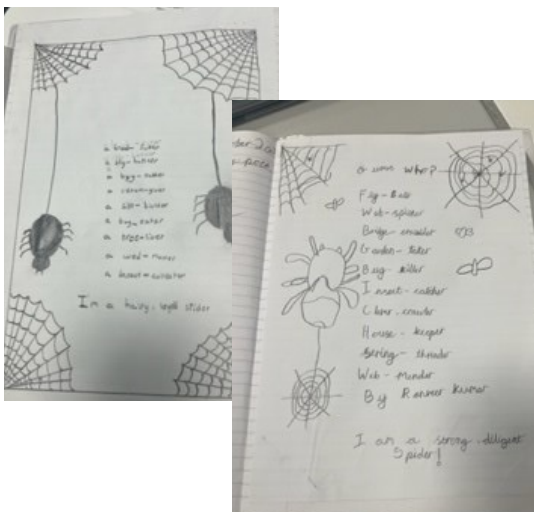
In English, we continued reading Charlotte's Web and kick-started the term by writing our own Kenning-style poetry about Charlotte the spider.

Next week, we will continue with our geography unit on agriculture in Italy and the UK. We will also begin our new computing unit .

In maths, we will learn how to compare the areas of two rectilinear shapes, marking the end of the topic on Area. Following this, we will start our new unit on Multiplication and Division with 3 and 6 times tables. Alongside, we will continue our daily practice of the 4 times tables.

In English, we will begin planning our own newspaper report. Following the drama we did this week, we will write a report about the miracle on Zuckerman farm!

Year 4 spider poetry:



PSHRE Focus: Celebrating Difference In PSHRE this term, we will discuss and understand the influences that lead us to make assumptions based on what people look like. Through this we will learn to accept people for who they are and take an active approach to anti-bullying. We will gain an understanding of the what to do when bullying occurs and by the end of the unit, we will know what makes us unique and special.



Child of the week:

4 Redgrave: Tayla **4 Simmonds:** Harrison **4 Farah:** Esha

Remember to read 3 times a week and practise your timetables on Rockstar Maths.

Contact us: year4@priorschool.com 01628 600300